



SANDY  
TOWN  
COUNCIL

ANNUAL REPORT 2012/13

# Foreword from the Mayor

---

I am pleased to introduce my second annual report from Sandy Town Council about the Council's activities during an exceptionally busy year. 2012 was a busy year for a lot of people with the Queen's Diamond Jubilee celebrations and Olympics – all our riches coming at once. As in previous Jubilee years members of the community arranged events and street parties, many of which I had the pleasure of attending. I have never cut so many cakes in so short a time. We had many nominations for the Mayor's award last year and it seemed fitting to make a special award for the Diamond Jubilee. Mrs Poppy Cope was the recipient of this diamond shaped award for her services to the community.

As in previous years Sandy was a Jubilee Beacon site and it is thanks to Sandy 1<sup>st</sup> Scout Group who took on the organisation with Sandy Town Council. It was with a great sense of occasion that we all gathered on the Market Square and then marched up the hill behind the Scout Reunion Band to wait for the appointed time to light the beacon. It was one of those rare rain-free days!

At last year's Annual Parish Meeting I invited many local organisations to attend and give presentations. It was heartening to hear how much volunteering takes place in and around Sandy and Beeston. During my term of office I wanted to connect to as many schools, groups and organisations in Sandy and Beeston as I could and I hope I have achieved that.

The community continues to thrive and it's due to the hard work of many teams that we have so many voluntary organisations from youth groups to the new Town Team that really make that happen. You don't need to be on a committee, but please do what you can to support them – even if it's just volunteer to put posters up.

I would like to thank all the organisations who have welcomed me to their events and I hope that my presence has helped in some way to publicise your work and fundraising efforts.



Cllr Mrs Susan Sutton  
Town Mayor

# The Council

---

The purpose of Sandy Town Council is to represent all the people of Sandy and Beeston, to act as advocate for this community, to enhance our local environment and, together with our partner organisations, to seek better service provision for the town.

The Council comprises 15 elected members who will normally serve a four year term, the last elections were held in 2011. However, two by-elections have been held during the year. Cllr Andy Maycock joined the council as member for Fallowfield Ward in August 2012 and Cllr Sharon Walsh as member for Pinnacle Ward in October 2012 following the resignation of two former councillors. At the time of writing a third councillor has moved out of the area and a new member for Pinnacle Ward is to be elected on 2 May 2013. Although these elections have been costly for the tax payers in monetary terms the fact that they have been contested is a sign of a vibrant and engaged community.

During the year Town Councillors have represented STC on the following outside bodies:

- 22 Squadron Air Training corps – Parents & Friends Support Committee
- Sandy Twinning Association
- Sandy Charities
- Sandy Enhancement Group
- Sandy Sports and Leisure Association
- Sandy Village Hall
- Sandy Young People's Youth Club
- Sandy Town Team

as well as attending other events to represent the Town Council, conducting monthly surgeries and keeping their knowledge up to date through briefing events and conferences.

All Town Councillors are unpaid volunteers who give their time freely because they are committed to their local community.

The work of the council has been managed by three main committees:

- 1 Development Scrutiny Committee
- 2 Policy, Finance and Resources Committee
- 3 Community Services and Environment Committee

with support from an HR sub-committee and several task and finish groups. All councillors are members of two out of three of the principal standing committees.

Communication with the community has been an important theme for the year. In addition to working with members of the community on a daily basis, the Council has continued to hold regular monthly surgeries at Sandy Library which give residents the opportunity to raise issues of concern and talk about their aspirations for the future of the town.

At the end of the year the Council launched its refreshed website which we hope will be a primary channel of information and communication with the community in the future. The Council continues to place a regular advertisement in the monthly Sandy Bulletin and we engage actively with the local news media. The Town Council has purchased and installed 5 new noticeboards to help publicise local events and meetings, two of these are solely for community use.

We have also welcomed many visitors to the Town Council's offices where our staff are available on a daily basis for drop-in callers. Our premises have been made available for a range of community groups and organisations including the Town Team, the RSPB, SEG and others.

The Council offices have also been used during the year to provide meeting space for Central Bedfordshire Council and as a base for delivery of aspects of their services eg local Housing Needs service, Troubled Families programme. Sandy Town Council has been working hard to improve and encourage joined up working with our principal authority, Central Bedfordshire Council, and we have collaborated on several projects over the year.

In order to carry out its work the Town Council has met 13 times this year and held over 35 committee and sub-committee meetings. Most of these meetings have been held in public and many attended by residents. The council welcomes public and press and in the last few years we have received constructive criticism from some people who attended our meetings about accessibility. As a result of this the Council is now investigating physical changes to the meeting chamber and other procedures to improve participation.

During spring 2012 the Council agreed to move its offices and meeting chamber to the Old Chapel in Pleasant Place. This building was felt by some to be better suited to the long term needs of a modern local council. Councillors were divided in their opinions about the prudence of this move in the present economic climate and in December 2012 the Council changed its plans and determined to remain at 10 Cambridge Road.

Sandy Town Council has responded to consultations which affect Sandy including several from Central Bedfordshire Council eg the recent Sandy Conservation Area appraisal consultation and earlier in the year the review of the Biggleswade and Sandy Local Area Transport Plan. As well as working with Central Bedfordshire Council, we have worked with a range of partner organisations including Bedfordshire Rural Communities Charity, Sandy Town Team, Bedfordshire Police, Luton and Dunstable NHS Trust and many others.

The Town Council is supported by a team of 12 staff (6 part-time and 6 full-time) who together have managed an increasing workload fuelled by changes to local government policy and legislation and increased expectation following the Localism Act 2011. The staff headcount has remained stable although the overall number of contracted hours worked by staff has been reduced during the year. The Council continues to look for improvements to its efficiency.



Figure 1 Councillor at work



Figure 2 Presentation of Mayor's Community Award

# Services and Projects

---

## Allotments

Unfortunately, despite continued efforts and joint work with Central Bedfordshire Council and Sandy and District Allotments Association, Sandy Town Council has been unsuccessful in securing a new allotment site within or even near the parish boundary. The decision to close the existing non-statutory temporary allotment site was taken with regret in March 2013 and all existing tenancies will cease in November 2013. The Council will continue its search for a new site and maintain its waiting list in the meantime.

## Cemetery

Sandy Town Council acknowledges the importance of Sandy cemetery as a place for commemorating the life of a loved one and acting as a focus for grief. Therefore the Council has made every effort to maintain the cemetery to the highest possible standard of care and dignity while providing a pleasing and tranquil environment. The burial regulations have been reviewed and some changes made to the planned layout of the remaining space. There have been 33 burials and 21 interments of ashes in Sandy Cemetery during the past year. The Chapel has been used for civil and religious funeral services and improvements have been made to the planting in the cemetery.

It is planned to extend the cemetery on the land currently used for allotments during the next few years. Studies of soil contamination levels have been commenced this year and further work will be necessary once the site has been vacated and allowed to settle. Archaeological and ecological surveys will be necessary before development work can begin. Meanwhile capacity in the cemetery is reducing though if burials continue at the present rate will suffice for several years.



Figure 3 Cemetery Chapel

## Public Open Space and Recreational Facilities

The Council's team of grounds staff has continued to maintain football and cricket pitches, play equipment and planting within Sandy and Beeston. The adoption of additional public open space and play equipment within the Fallowfield estate by Sandy Town Council in April 2012 has added to this workload. The play equipment and planting at Fallowfield in particular requires continued work to bring this area up to the standard of other Town Council owned facilities. Problems with dog fouling and littering in the area are being addressed with the support of the community and Central Bedfordshire Council although progress to date has been limited.

The removal of skate park equipment at Sunderland Road Recreation ground in July 2012 generated some adverse publicity for the Council. This equipment was the property of the charity, Sandy Skating Association 2000, but stood on Town Council land. In April 2012 the charity could no longer afford to maintain and insure the equipment and asked the Council to take over its maintenance, insurance and supervision. The equipment was removed following routine and then specialist maintenance inspections undertaken at the Town Council's expense. The equipment was very dangerous and could not be made safe even on a temporary basis so the removal was swift. As yet Sandy Skating Association 2000 has not approached the Council with any firm plans or proposals for the future of its remaining equipment or replacement of the demolished ramps and the future of this site and the remaining ramp is yet to be determined.

The Riddy Nature reserve continues to be managed for the Town Council by the Wildlife Trust for Bedfordshire in conjunction with Bedfordshire Rural Communities Charity. This year we have qualified for Higher Level Stewardship for the area. Despite some problems with metal detecting and other inappropriate use of the reserve overall the area is enjoyed and appreciated by residents.

Beeston Green is an important area of common land which is owned by the Town Council and maintained for the community.



Figure 4 Beeston Common

It is legally protected by way of its status as a registered village green. Unfortunately, this has not deterred some residents from parking on the common land. The common was used for a Diamond Jubilee community event in the summer of 2012.

The Town Council has supported a range of sporting activities including club football at Sunderland Road and Bedford Road, cricket at Sunderland Road and bowls at Sandy Bowling Club by providing subsidised pitch fees and beneficial leases to several sports organisations. These arrangements do not prevent members of the public from making use of the facilities and in return volunteers from the various clubs involved contribute to the upkeep of public facilities.

During 2012/13 management of the Jenkins Pavilion was contracted out to Stevenage Leisure Ltd and the building has been let by them on the Council's behalf. SLL were already managing the Sandy Sports Centre and were able to combine activities reducing the operating costs of the Jenkins Pavilion and encouraging wider usage of the building by different sectors of the community (for example, active retired exercise classes have been particularly successful).

Public open space at Pinnacle Hill, Pinnacle Field and Sunderland Road was maintained and made available during the year for Jubilee events, the circus, funfair and Sandy Carnival.

### **Markets and Town Centre Facilities**

Recently Sandy Town Team has been championing the Friday market and the monthly Farmers Market but, as in many towns, it is proving difficult to sustain a regular market and during the past year Sandy Town Council chose not to invest directly in redevelopment of the market. However, the Council has worked with the Town Team providing free meeting facilities for them and allowing them to run Car Boot sales in the Town Centre market on Saturdays once per month. Space is available for this as pressure on car parking spaces has reduced since offices at Shannon Court were vacated.

The health of the High Street and the retail businesses in Sandy is a matter of concern to the Town Council and by retaining the public toilets and the free car parking the Council aims to support the town centre. Unfortunately the setting of high retail rents and increases to the business tax rate are outside the Council's control and have had an impact on local businesses as has the current wider economic climate.

The Town Council has provided seasonal horticultural displays throughout the town centre, cemetery and churchyard and the Sandy Enhancement



Group has again contributed to Sandy's appearance with the development of the Jubilee harbour near the station.

The Town Centre Car Park was made available for temporary siting of a Police Pod (since moved to Sunderland Road Recreation Ground) and NHS mobile breast screening clinic.

### Christmas Lights

Sandy Town Council took over provision of the Christmas 2012 illuminations as the Sandy Chamber of Trade felt unable to continue this work. The old illuminations donated to the Council by the Chamber of Trade did not pass our safety tests and so could not be reused, resold or donated. New illuminations were hired from a contractor on a three year contract and a Christmas tree was introduced into the Market Square. Investment in safe and appropriate infrastructure was necessary and it is hoped to build upon this in future years. A lights switch on event was organised by the Town Council with support from many local organisations and businesses and was well attended. One of the goals for this event was to allow local organisations and charitable groups to showcase their activities and raise funds for themselves. It is planned to repeat the event in 2013.



Figure 5 Christmas Tree in the Market Square

### Community Grants

The importance of a range of diverse and thriving community organisations in building a vibrant town cannot be overestimated. Sandy Town Council aims to support any local groups which are working to enhance the well-being of the community and has provided publicity opportunities and subsidised photocopying and laminating services to local groups during the year. The Town Council sets aside a small budget to make direct grants to local groups every year and this year funds have been given to several organisations.

## Town Council Grants

- Sandy & District Horticultural Association £360
- Sandy Fire Cadet Scheme £1,000
- Shefford & Sandy Hockey Club £100
- Link a Ride £250
- Biggles FM £500
- Pam's Knitwits £150
- Nexus £500
- Sandy Twinning Association £500

Decisions about who receives community grant funding are delegated to a panel composed of councillors and "ordinary residents". The panel, known as Sandy Community First, has also distributed funding made available by central government (Community First funding stream) for community projects which help to develop community resilience and build social capital in the ward of Sandy. Again these are small grants which have gone to disparate organisations working with different groups in the community. The work of the panel has been supported by Sandy Town Council and by Central Bedfordshire Council.

Allocation of grants is made in accordance with the priorities identified in the Sandy Community First plan.

In November the Town Council hosted a Fit for Funding Sandy event to try to help community groups complete grant applications and learn more about seeking third party funding.

Community First Grant applications recommended by the panel include:

- Sandy Pre-School £500
- Blunham Playing Fields Association £500
- Viv's Bingo £400
- Sandy Helping Hands Unemployment and Guidance Centre £363
- St Swithuns Community Choir £350
- 22 (Sandy) Air Training Corp £250
- Sandy Historical Research Group £856
- Dragons Thai Boxing Gym £1,200
- Sandy Carnival Association £955
- Kings Road Patient Participation Group £392
- Kestrels Archery Club £380
- Full House Theatre Company £350
- Sandcastles Playgroup £250
- Shefford & Sandy Hockey Club £300

In addition the Council has agreed to donate funds to Sandy Football Club to enable them to refurbish and extend the Football Pavilion at Bedford Road. This grant is conditional upon the successful granting of a larger award from the Football Foundation. An interest free loan of £2,500 was made to the Village Hall to assist them with their finances in February 2013. Congratulations to the friends of St Swithuns Parish Church who have made early repayment of a loan made to them by the Town Council for refurbishment of the parish clock.

### **Tourism and Visitors**

Sandy Tourist Information Centre is situated behind the Town Council offices at 10 Cambridge Road and has been open to the public 6 days per week during this year. The focus of the Tourist Information has been to encourage and support visitors to Sandy and to promote access to the countryside in the area as well as providing information to local residents.

A series of guided walks and talks have been provided through the year by the Tourism Advisers. The Advisers also worked hard with other Sandy Town Council officers and members of the community to help secure Walkers are Welcome status for Sandy. Sandy is the first community in Bedfordshire to secure Walkers are Welcome accreditation which was awarded in July 2012 following a successful community led campaign. The award was celebrated with a special walk and celebratory cake.



**Figure 6 Walkers are Welcome Launch Event**

A Diamond Jubilee Walk leaflet with 6 new walks around Sandy was co-produced with Central Bedfordshire Council to celebrate the change and continuity of the landscape and town over the past 60 years. The

publication promotes walking in Sandy by appealing to different types of walkers who enjoy different types of terrain.

The Town Council has hosted an increased number of group visits from local schools to the Roman Sandy exhibits at 10 Cambridge Road as well as welcoming individual visitors to view the exhibits on permanent display.

### Community Safety

The Town Council has worked with the police to support community safety and crime prevention and detection efforts in Sandy. The Town Council has funded CCTV services in the town centre and at Sunderland Road Recreation ground. Members and officers have attended several meetings with our local MP, Alistair Burt, Chief Constable Alf Hitchcock and the newly appointed Police and Crime Commissioner, Olly Martins to advocate for effective policing in Sandy and to protest against potential cuts in PCSO provision which were threatened in 2012.

Members participated in a multi-agency Operation Vision in the Engayne Avenue area of Sandy in February 2013 to raise awareness of police activity and to promote community safety initiatives. At that event it was announced that the anticipated PCSO cuts would not take place. Issues of anti-social behaviour, speeding and obstructive parking have all been raised with the police and Central Bedfordshire Council's Community Safety team during the year and remain important to the Town Council. Sgt Gary Kidd and PCSO Ann Jeeves have regularly attended Sandy Town Council meetings to report on local police matters and to respond to concerns raised by the community, in particular to the increase in house burglaries experienced in late 2012 and January 2013. Sandy Neighbourhood Watch has been relaunched and the Town Council continues to support any developments which promote increased community safety.



Figure 7 Operation Vision in Sandy

# Planning and Development

---

The Town Council has reviewed 92 planning applications sent to us by the planning authority, Central Bedfordshire Council, for comment. The Town Council is not a planning authority but comments on the plans on behalf of the community. Most planning applications are dealt with by the Development Scrutiny Committee but larger and more significant applications are referred to the Town Council. This year Development Scrutiny Committee meetings have been well attended by members of the community who wished to make representations about proposed developments.

The Development Scrutiny Committee also responded to planning consultations on behalf of the Town Council including consultations on documents which go to make up the suite of documents which form the Central Bedfordshire Local Development Framework for the North.



Figure 8 Preparation for building at Tesco site, New Road

There have been few large scale developments affecting Sandy during 2012/13. However, the Town Council has maintained its contacts with several developers in the area and was pleased to welcome the start of construction work by Tesco at the New Road site in February 2013.

# Finance

---

The Council's unaudited draft accounts for 2012/13 are attached to this report.

Council spending was determined by the planned budget for the year although inevitably some adjustments to the spending plans were made in-year. The overall outcome was a small overspend of 3% because of these changes. The Council made a number of significant capital purchases including replacement of one of its two vehicles, purchase of a new mobile mess room for the grounds staff, replacement of telephone system and one computer, purchase of mower and other grounds maintenance equipment and infrastructure for Christmas lights.

The Council's projected income for the year was accurate and was boosted by receipt of a sum of £380,000 which was negotiated in recompense for the adoption of public open space at Fallowfield and the future demands maintenance of this area will place on the public purse. Part of this sum has already been used for maintenance and the remainder will be used over time to meet continuing needs. Leaving aside these funds, the Council's general and earmarked reserves are at a modest level.

The Council has planned a balanced budget for 2013/14 which included a significant percentage increase in precept for tax payers. Central Government's changes to the benefits system, specifically the localisation of council tax benefit support, have affected the Town Council's future financial planning and even with the planned increase in precept for 2013/14 the financial management of the council will present challenges in future years as the tax base for precept collection has been permanently reduced. Central Government paid a grant to Central Bedfordshire Council to be allocated to Town and Parish Councils in their area to provide mitigation funding in view of the planned changes to the benefit system. This grant was passed on in full by Central Bedfordshire Council and amounted to £42,378. The Town Council has been advised that this mitigation funding will not be available in future years.

# Councillors

---

## Members of Sandy Town Council

### *Beeston Ward*

Cllr M P Scott  
"The Gowans"  
Seddington Nursery  
Great North Road  
Seddington  
Sandy  
SG19 1NZ

Home 01767 681457  
Work 01767 680983

scott729@btinternet.com



### *Ivel Ward*

Cllr W Jackson  
14 Westfield Gardens  
Sandy  
SG19 1HF

01767 682549  
will.jackson622@btinternet.com



Cllr M J Pettitt  
42 Swansholme Gardens  
Sandy  
SG19 1HL

01767 680082  
martin.pettitt@virginmedia.com



Cllr Mrs M B Runchman  
4 Cedar Gardens  
Sandy  
SG19 1EY

01767 690093  
mrunchman@yahoo.com



Cllr R J Smith  
10 Glebe Road  
Sandy  
SG19 1LS

01767 681672  
bob.sandy@live.co.uk



Cllr Mrs S J Sutton  
33 Bedford Road  
Sandy  
SG19 1EP

01767 227589



*Fallowfield Ward*

Cllr D W J Sharman  
21 Falcon Close  
Sandy  
SG19 2TA

01767 683868



Cllr A Maycock  
Sweeties  
High Street  
Sandy  
SG19 1AQ

01767 691169  
amthemusicroom032@gmail.com



Cllr G G N White  
9 The Finches  
Sandy  
SG19 2UL

01767 692782  
mr.geoffrey.white@gmail.com





***Pinnacle Ward***

**Clr P N Aldis  
7 Mayfield Court  
Sandy  
SG19 1NF**

**01767 691333  
nigel.aldis@centralbedfordshire.gov.uk**



**Clr J Ali  
22 Market Square  
Sandy  
SG19 1JA**

**01767 689743  
Mob: 07962 361102**



**Clr K Lynch  
4 Pyms Way  
Sandy  
SG19 1DD**

**01767 681739  
kenlynch1@btinternet.com**



**Clr C Osborne  
Summercourt  
2 Leeds Smith Drive  
Sandy  
SG19 1LU**

**01767 682032**



**Clr Ms S Walsh  
43 High Street  
Sandy  
SG19 1AG**

**07973 459091  
Sharon.walsh.sandy.beds@gmail.com**



# Electoral Wards

---

## *Beeston Ward includes properties in:*

Ash Close, Brook End, East Side, Elder Close, Girtford Bridge, Grange Gardens, Great North Road, High Road, Hillview, Lime Avenue, London Road, Nursery Drive, Meadow Close, New Road, Orchard Road, Tempsford Road, The Baulk, The Cloches, The Crescent, The Green, The Knolls, West View, Whitestones

## *Ivel Ward includes properties in:*

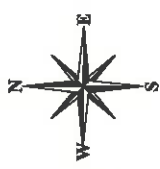
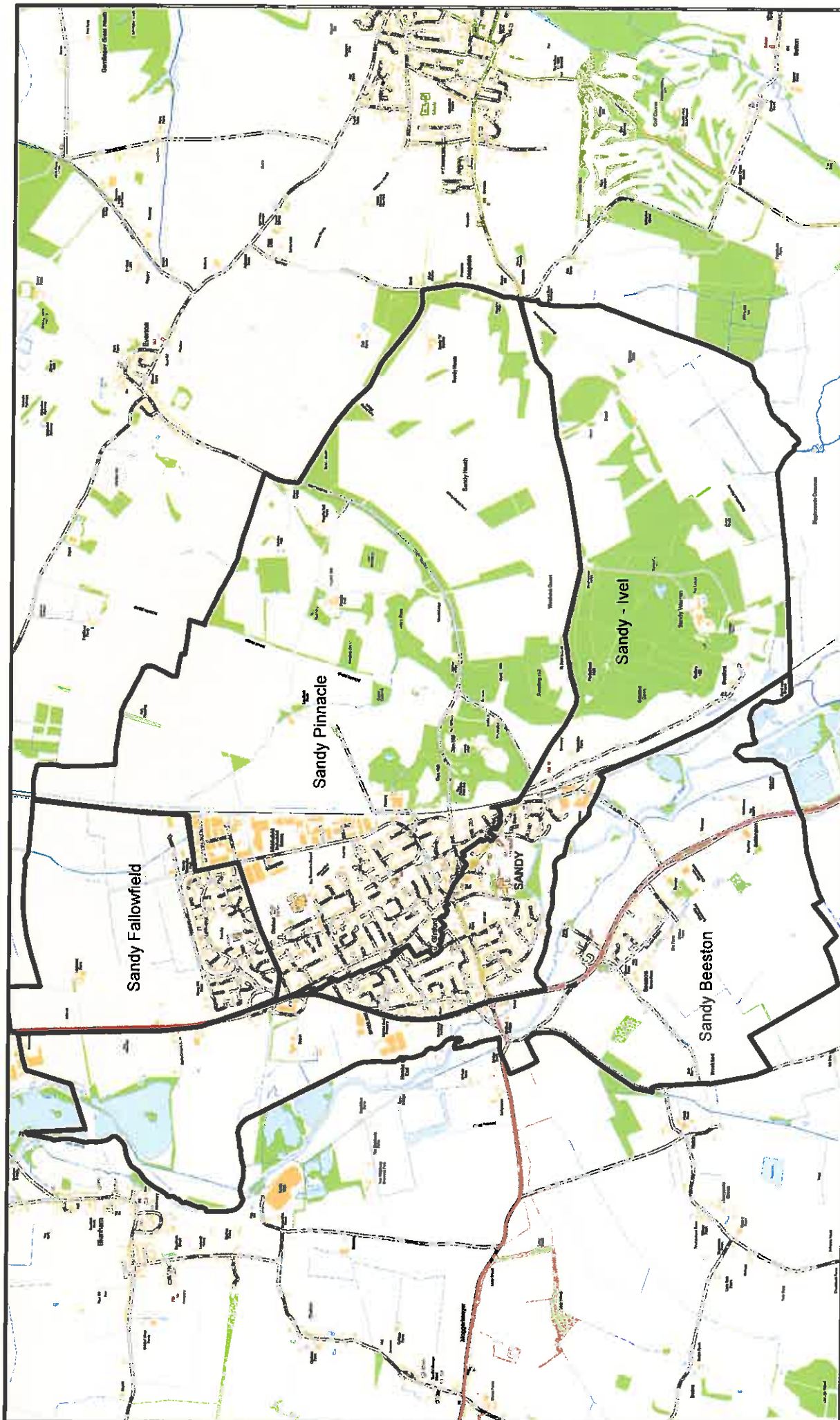
Albion Court, All Hallows, all Saints Way, Bedford Road, Bickerdikes Gardens, Birch Grove, Brandreth Place, Braybrook, Carter Street, Cedar Gardens, Church Path, Coopers Close, Deepdale, Edgumbe Court, Elm Tree Road, Filland Court, Foster Grove, Girtford Crescent, Greyhound View, Harvey Court, Heron Close, High Street, Ivel Road, Kings Road, Laburnum Road, London Road, Manor Road, Market Square, Mayfield Court, Mill Lane, Monoux Place, Ongley Court, Ivel Road, Park Court, Park Mews, Park Road, Poplar Close, Potton road, Queens Road, Rivermead Gardens, Robert Hunt Gardens, Roman's View, Sandford Rise, Sandpiper Court, South Road, Spencer Road, Spring Grove, Station Road, Stratford Road, Swan Lane, Swansholme Garden Court, Swansholme Gardens, The Avenue, West Road, Western Way, Westfield Gardens, Willow Rise, Woolfield

## *Fallowfield Ward includes properties in:*

Avocet Close, Brambling Close, Crow Hill, Cuckoo Close, Dove Close, Falcon Close, Fieldfare, Goldfinch Drive, Hawk Drive, Kestrel Way, Kingfisher Close, Larks Rise, Linnet Close, Merlin Drive, Osprey Close, Owlswood, Partridge Piece, Pipit Grove, Plovers Field, Robin Close, Rothbury Close, Starling Close, Swallow Crest, Swift Close, Tempsford Road, The Buntings, The Finches, The Harriers, The Jays, The Rookery, Weavers Green, Woodcock Close, Woodpecker Way, Wren Close

## *Pinnacle Ward includes properties in:*

Abbey Grove, Alfred Cope Road, Alnwick close, Arran Close, Balmoral Close, Banks Drive, Belam Way, Berwick Way, Brickhill close, Brickhill Road, Brindley Close, Bunyan Road, Cambridge Road, Carlisle Close, Cauldwell Court, Cherrycroft, Churchill Way, College Road, Dapifer Drive, Deepdale, Delamare Close, Downing Court, East Road, Edward Close, Engayne Avenue, Everton Road, Faynes Court, Friars Walk, Hadley Court, Havelock Close, Kingsley Court, Glebe Road, Greens Close, Leeds Smith Drive, Lindisfarne Close, Longfield Road, Magnolia House, Malaunay Place, Maple Road, Market Square, Medusa Way, Middleham Close, Midland Road, Mills Walk Moores Court, Newton Way, Northcroft, Oak Close, Peels Place, Pentland Close, Powers Close, Pickering close, Pleasant Place, Potton Road, Quince Court, Rectory Court, Rowan Court, Rutland Gardens, Sand Lane, Sandon Close, Shannon Close, Skipton Close, St Neots Road, St Swithuns Way, Stirling Close, Stonecroft, Sunderland Road, Swaden, Talisman Close, Warkworth Close, Waverley Avenue, Wesley Road, Winchester Road, Windsor Way, Wynnefield Walk.



Date: 26 June 2012

Scale 1:30000

**Sandy Parish with Electoral Ward Boundaries**



© Crown Copyright and database right. 2012  
 Ordnance Survey 100049029.  
 Central Bedfordshire Council.  
 Cities Revealed aerial photography copyright  
 The GeoInformation Group, 2010

# Table of Members' attendance at meetings 2012/13

Town Council		
Councillors	Meetings attended (Total 13)	% attendance
Cllr Aldis	13	100%
Cllr Ali	10	77%
Cllr Jackson	13	100%
Cllr Mrs Lunn <sup>1</sup>	7	
Cllr Lynch	7	54%
Cllr Maycock <sup>2</sup>	5	63%
Cllr Osborne	9	70%
Cllr Pettitt	11	85%
Cllr Mrs Runchman	11	85%
Cllr Scott	13	100%
Cllr Sharman	13	100%
Cllr Smith	12	92%
Cllr Mrs Sutton	13	100%
Cllr Ms Walsh <sup>3</sup>	6	86%
Cllr White	12	92%

<sup>1</sup> Cllr Lunn resigned March 2013

<sup>2</sup> Cllr Maycock was elected on 13<sup>th</sup> August 2012

<sup>3</sup> Cllr Walsh was elected on 12<sup>th</sup> October 2012

## Development Scrutiny Committee

Councillors	No of meetings attended (Total 17)	% attendance
Cllr Ali	6	35%
Cllr Mrs Lunn <sup>1</sup>	9	-
Cllr Lynch	5	29%
Cllr Maycock <sup>2</sup>	4	31%
Cllr Osborne	15	88%
Cllr Pettitt	10	59%
Cllr Sharman	17	100%
Cllr Smith	11	65%
Cllr Mrs Sutton	14	82%
Cllr White	14	82%

## Policy, Finance & Resources Committee

Members	No of meetings attended (Total 6)	% attendance
Cllr Aldis	6	100%
Cllr Jackson	5	83%
Cllr Mrs Lunn <sup>1</sup>	1	-
Cllr Osborne	3	50%
Cllr Pettitt	6	100%
Cllr Mrs Runchman	5	83%
Cllr Scott	5	83%
Cllr Sharman	5	83%
Cllr Ms Walsh <sup>3</sup>	2	67%
Cllr White	5	83%

## Community Services & Environment Committee

Members	No of meetings attended (Total 6)	% attendance
Cllr Aldis	6	100%
Cllr Ali	3	50%
Cllr Jackson	6	100%
Cllr Lynch	1	17%
Cllr Maycock <sup>2</sup>	3	75%
Cllr Mrs Runchman	5	83%
Cllr Scott	3	50%
Cllr Smith	1	17%
Cllr Mrs Sutton	2	34%
Cllr Ms Walsh <sup>3</sup>	4	100%

<sup>1</sup> Cllr Lunn resigned March 2013

<sup>2</sup> Cllr Maycock was elected on 13<sup>th</sup> August 2012

<sup>3</sup> Cllr Walsh was elected on 12<sup>th</sup> October 2012

# Accounts 2012/13

<i>31st March 2012</i>	<b>Income Summary</b>	<i>31st March 2013</i>
384,529	Precept	412,412
<b>384,529</b>	Sub Total	<b>412,412</b>
	<b>Operating Income</b>	
2,664	Administration -Office	386,726
111	Administration -Works	800
943	Allotments	283
12,864	Cemetery	17,253
4,718	Car Park (including Market)	3,468
1,423	Bedford Road Open Space	1,202
6,493	Sunderland Rd Open Space & Pavilion	6,656
18,827	Tourist Information Centre	11,413
1,484	Annual Report & Newsletter	0
457	S.E.G.	0
0	Christmas Lights	3,627
3,551	The Riddy	2,174
7,079	Miscellaneous (incl Interest)	4,806
4,298	Capital A/c	9,426
<b>449,440</b>	<b>Total Income</b>	<b>860,245</b>
	<b>Running Costs</b>	
194,397	Staff	212,063
66,494	Administration -Office	93,455
27,432	Administration -Works	28,712
533	Allotments	240
20,257	Footway Lighting	7,052
6,845	Cemetery	8,670
159	Churchyard	0
15,803	Car Park (including Market)	16,459
8,569	Public Toilets – Car Park	4,403
10,209	Bedford Road Open Space	4,395
35,082	Sunderland Rd Open Space & Pavilion	38,254
304	Beeston Green	281
3,000	The Pinnacle	3,000
42,250	Tourist Information Centre	36,413
1,249	Grass Cutting	3,749
20	Litter Bins, Seats & Shelters	508
3,529	Annual Report & Newsletter	2,618
1,031	S.E.G.	224
5,260	Christmas Lights	8,483
0	Fallowfield	770
5,410	The Riddy	5,728
21,245	Miscellaneous (incl Interest)	22,809
36,579	Capital A/c	34,107
2,255	Reserve A/c	4,417
<b><u>507,912</u></b>	<b>Total Expenditure</b>	<b><u>536,812</u></b>

<b>General Fund Analysis</b>		
150,549	Opening Balance	128,656
449,440	Plus: Income for Year	860,245
599,989		988,900
507,912	Less: Expenditure for Year	536,812
92,077		452,089
-36,579	Transfers TO/FROM Reserves	41,564
<b>128,656</b>	<b>Closing Balance</b>	<b>410,524</b>

### Balance Sheet as at 31 March 2013

<i>31st March 2012</i>		<i>31st March 2013</i>	
	<b>Current Assets</b>		
4,799	Debtors	4,779	
2,482	Stock	1,744	
3,095	Loan	0	
14,837	VAT Control	11,971	
0	PrePayments	350	
0	Accrued Income	6000	
-64,148	Current Bank A/c	-9,202	
59,823	High Interest (Precept ) A/c	0	
203,165	Capital A/c Santander	206,143	
0	Barclays Active Saver	330,262	
250	Petty Cash	248	
<b>224,302</b>		<b>552,294</b>	
<b>224,302</b>	<b>Total Assets</b>	<b>552,294</b>	<b>552,294</b>
	<b>Current Liabilities</b>		
0	Creditors	22,084	
3,602	Accruals	0	
13,922	S106 Accrual	0	
<b>17,524</b>		<b>22,084</b>	
<b>206,778</b>	<b>Total Assets Less Current Liabilities</b>	<b>530,211</b>	<b>530,211</b>
	<b>Represented By</b>		
128,656	General Reserve	410,524	
75,686	Capital Reserves	75,686	
2,436	Earmarked Reserves	44,000	
<b>206,778</b>		<b>530,211</b>	

The above statement represents fairly the financial position of the authority as at 31 March 2013 and reflects its Income and Expenditure during the year

# Council Contact Details and Addresses

---

## **Town Council Offices:**

10 Cambridge Road, Sandy SG19 1JE  
Tel: 01767 681491  
Fax: 01767 692527  
General Email: [admin@sandytowncouncil.gov.uk](mailto:admin@sandytowncouncil.gov.uk)

## **Town Council Staff:**

Delia Shephard

[delia.shephard@sandytowncouncil.gov.uk](mailto:delia.shephard@sandytowncouncil.gov.uk)

Jonathan Whitehurst

[jonathan.whitehurst@sandytowncouncil.gov.uk](mailto:jonathan.whitehurst@sandytowncouncil.gov.uk)

Carol Baker-Smith

[carol.baker-smith@sandytowncouncil.gov.uk](mailto:carol.baker-smith@sandytowncouncil.gov.uk)

Anne Elliott

[anne.elliott@sandytowncouncil.gov.uk](mailto:anne.elliott@sandytowncouncil.gov.uk)

Rosalind Crossman

[tourism@sandytowncouncil.gov.uk](mailto:tourism@sandytowncouncil.gov.uk)

Barry Groom

[tourism@sandytowncouncil.gov.uk](mailto:tourism@sandytowncouncil.gov.uk)

Richard Gilbert

Colin Eaton

Chris Smith

Paul Newbury

Brian Leonard



### **Tourist Information Centre**

Rear of 10 Cambridge Road, Sandy SG19 1JE  
Tel: 01767 682728  
Email: [tourism@sandytowncouncil.gov.uk](mailto:tourism@sandytowncouncil.gov.uk)

### **Stratford Road Depot**

Stratford Road, Sandy SG19 2AA

### **Cemetery**

Potton Road, Sandy SG19 2AA

### **Allotments**

Potton Road, Sandy SG19 1DJ

### **Play Areas**

Bedford Road Recreation Ground, Bedford Road, Sandy SG19 1EY  
Beeston Green, The Green, Beeston, Sandy SG19 1PY  
Sunderland Road Recreation Ground, Sunderland Road, Sandy SG19 1TH  
The Limes, Elder Close, Beeston, Sandy SG19 1GF  
Merlin Drive, Fallowfield, Sandy SG19 2UN

### **Jenkins Pavilion**

Sunderland Road Recreation Ground, Off Medusa Way, Sandy SG19 1TH

### **Public Conveniences**

Bedford Road Recreation Ground, Bedford Road, Sandy SG19 1EY

### **Town Centre Car Park**

High Street, Sandy SG19 1AG